

1,230 USF - YOGA STUDIO
97 USF - RESTROOMS

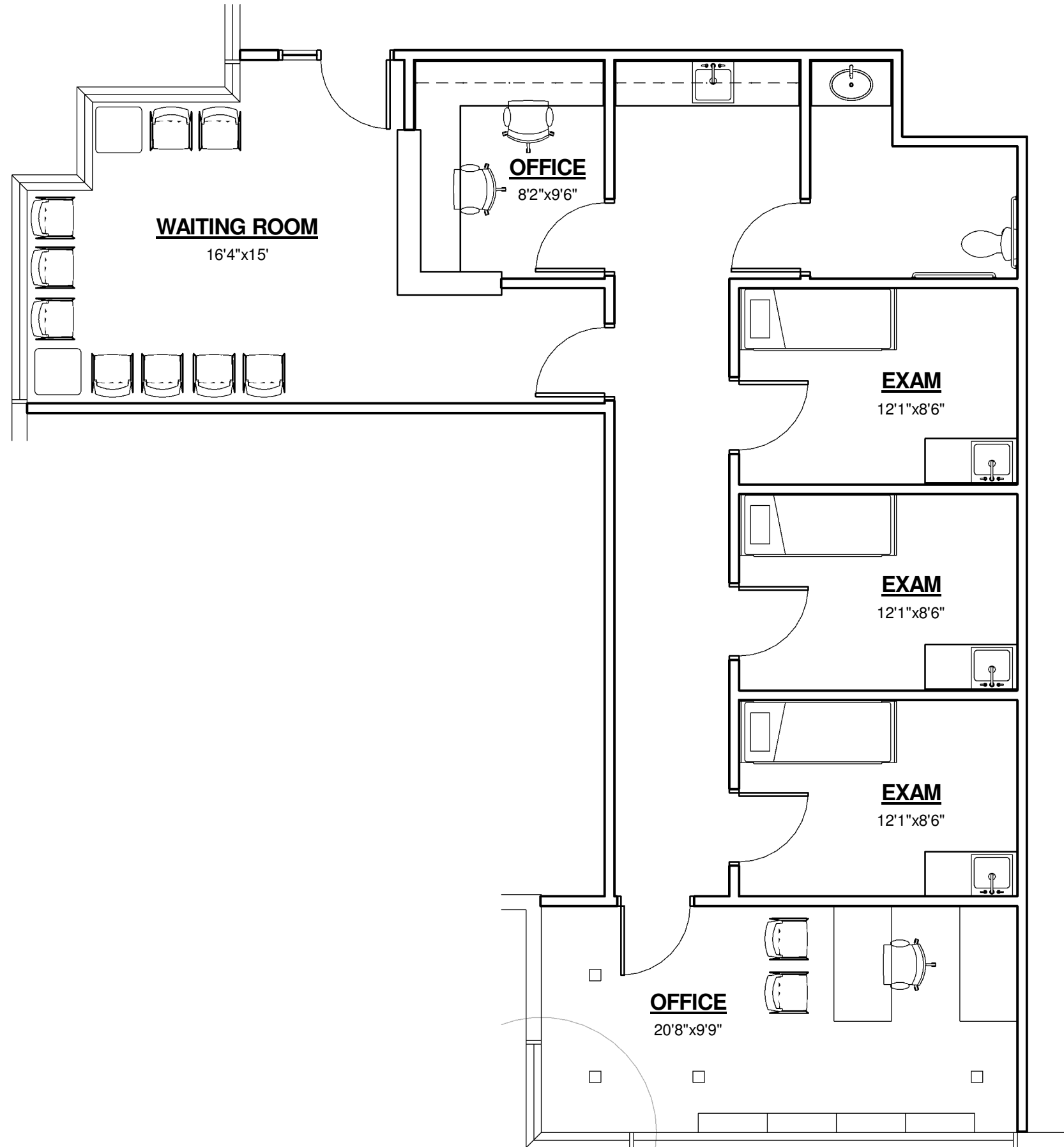


FLOOR PLAN - YOGA STUDIO / RESTRMS.

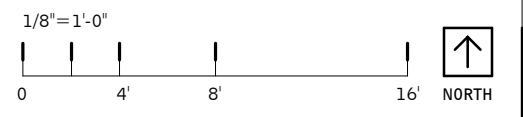
1/8" = 1'-0"

VJ FOUNTAIN HILLS MEDICAL CENTER

BUILDING A
16838 E. PALISADES BLVD.
FOUNTAIN HILLS, ARIZONA



This preliminary Space Plan represents our understanding of the space code requirements. The final construction documents are subject to review and comments from the landlord as well as local governmental agencies. Changes to the plan may be required to address comments after review of the plans through the plan check process. All square footages noted are preliminary and also may change when the Space Plan is finalized.



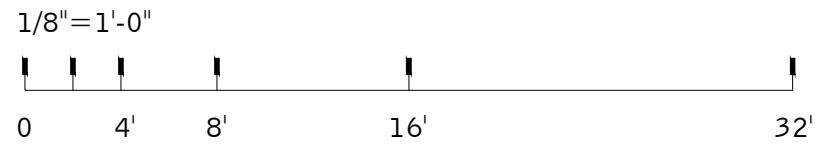
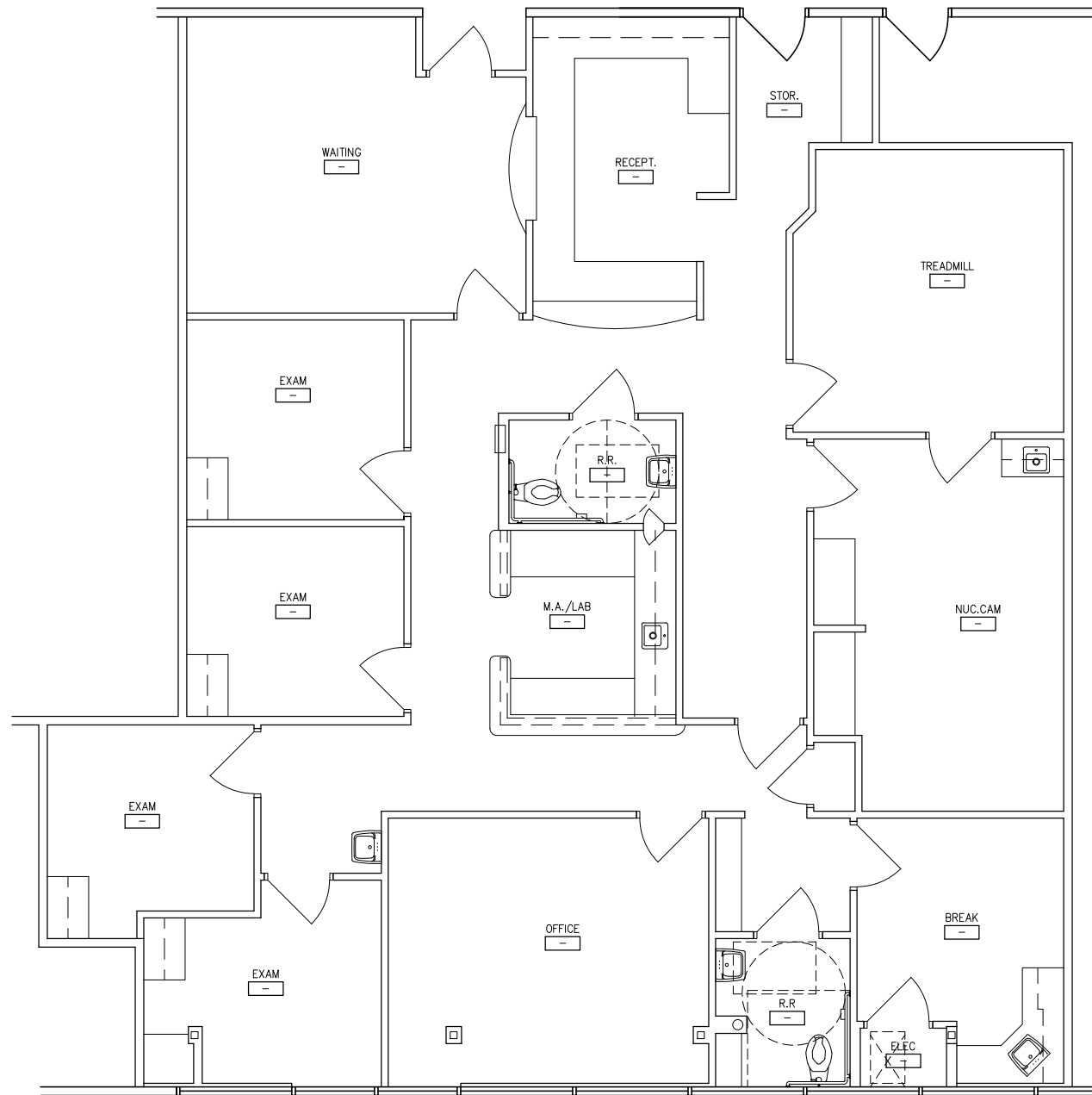
SUITE 123

FOUNTAIN HILLS MEDICAL CAMPUS
16838 E PALISADES BLVD, FOUNTAIN HILLS, AZ

WARE MALCOMB

PHX16-6034-00
04.29.16

SHEET
SP1



This conceptual design is based upon a preliminary review of entitlement requirements and on unverified and possibly incomplete site and/or building information, and is intended merely to assist in exploring how the project might be developed.



SCHEME:

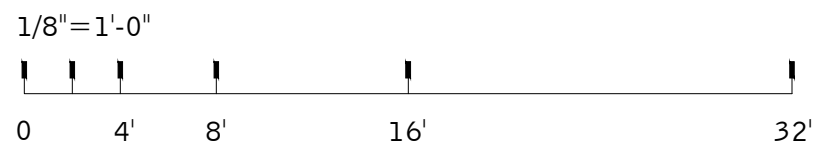
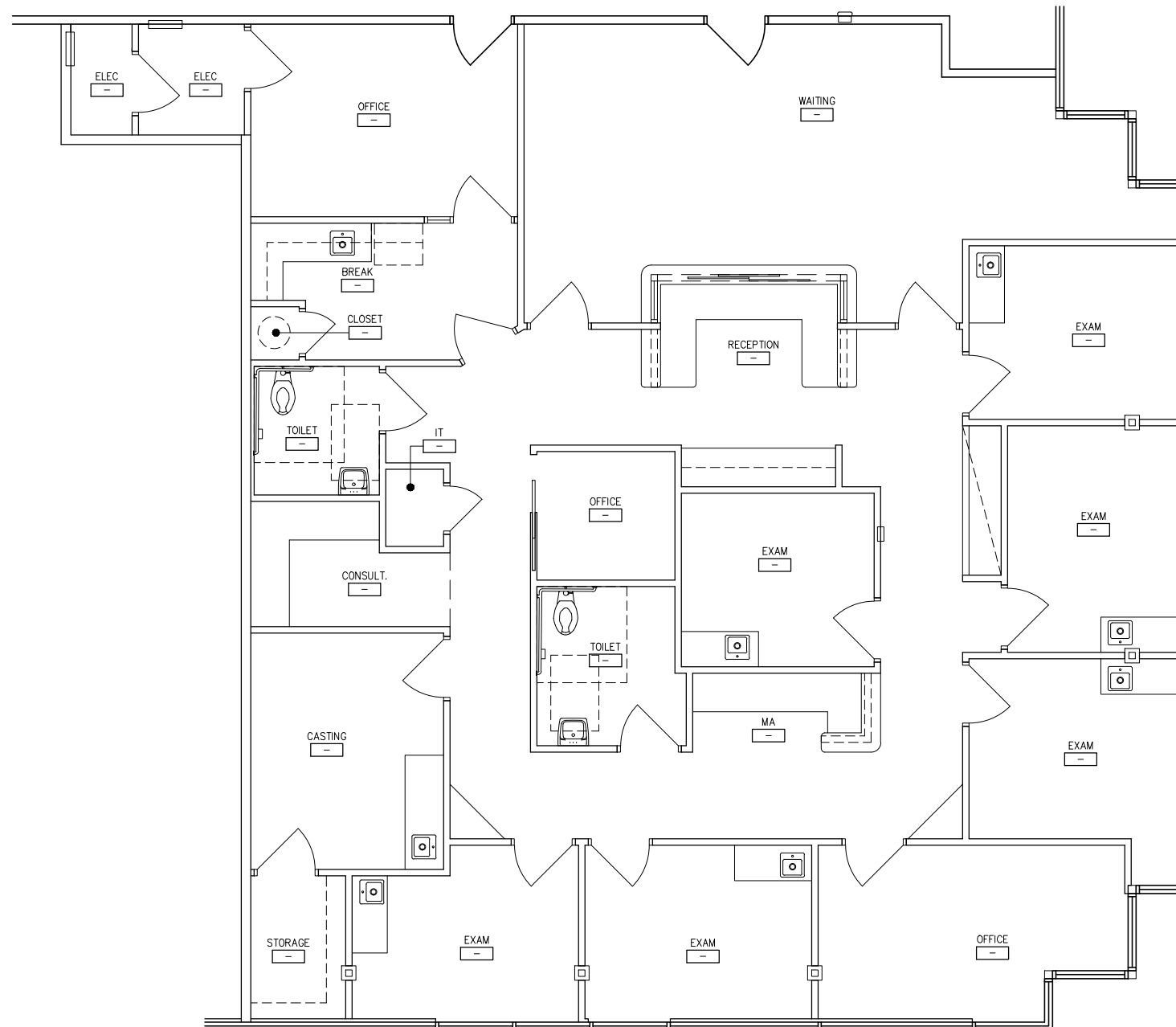
SUITE #107 FLOOR PLAN

V.J. FOUNTAIN HILLS MEDICAL CENTER
 16838 E PALISADES BOULEVARD, BLDG A

WARE MALCOMB

PHX17-6094-00
 11.10.2017

SHEET
A-1



This conceptual design is based upon a preliminary review of entitlement requirements and on unverified and possibly incomplete site and/or building information, and is intended merely to assist in exploring how the project might be developed.



SCHEME:

SUITE #105 FLOOR PLAN

V.J. FOUNTAIN HILLS MEDICAL CAMPUS
16838 E PALISADES BOULEVARD, BLDG A

WARE MALCOMB

PHX17-6093-00
11.10.2017

SHEET
A-1