

DESERT COVE  
MEDICAL CAMPUS  
±22,336 RSF



MEDICAL BUILDING FOR LEASE

# DESERT COVE MEDICAL CAMPUS

8962 E. DESERT COVE AVE.  
SCOTTSDALE, AZ 85260

Desert Cove Medical is an unrestricted medical office building within one block of the 427-bed HonorHealth Scottsdale Shea Medical Center.



PHYSICIANS REALTY TRUST

# MARKET OVERVIEW

## AREA SURROUNDED BY HIGH HOUSEHOLD INCOMES:



AVERAGE  
HH INCOME

3 MILE:

\$90,143

5 MILE:

\$96,785

7 MILE:

\$89,707



LOCATED WITHIN THE SCOTTSDALE CURE CORRIDOR

US ONCOLOGY  
RESEARCH

CVS CAREMARK  
PHARMACY INNOVATION

VIRGINIA G. PIPER  
CANCER CENTER

ADJACENT TO  
USPI SURGERY CENTER

## PROPERTY OVERVIEW

1 BLOCK NORTH OF  
SHEA BLVD. & 92ND ST.,  
NEAR HONORHEALTH  
SHEA CAMPUS

YEAR BUILT:

2007

CLASS

B

MEDICAL

SUITE SIZE:

2,357

RSF

TOTAL BUILDING SIZE:

22,336

RSF

STORY:

1

MEDICAL  
OFFICE BLDG.  
PARK & ENTER

PARKING RATIO:

4.15

SPACES PER  
1,000 RSF



# SUITE 100

±2,357 RSF

FOR LEASING INFO  
PLEASE CONTACT:

**SHEILA BALE**  
MANAGING DIRECTOR  
+1 602 224 4454  
sheila.bale@cushwake.com

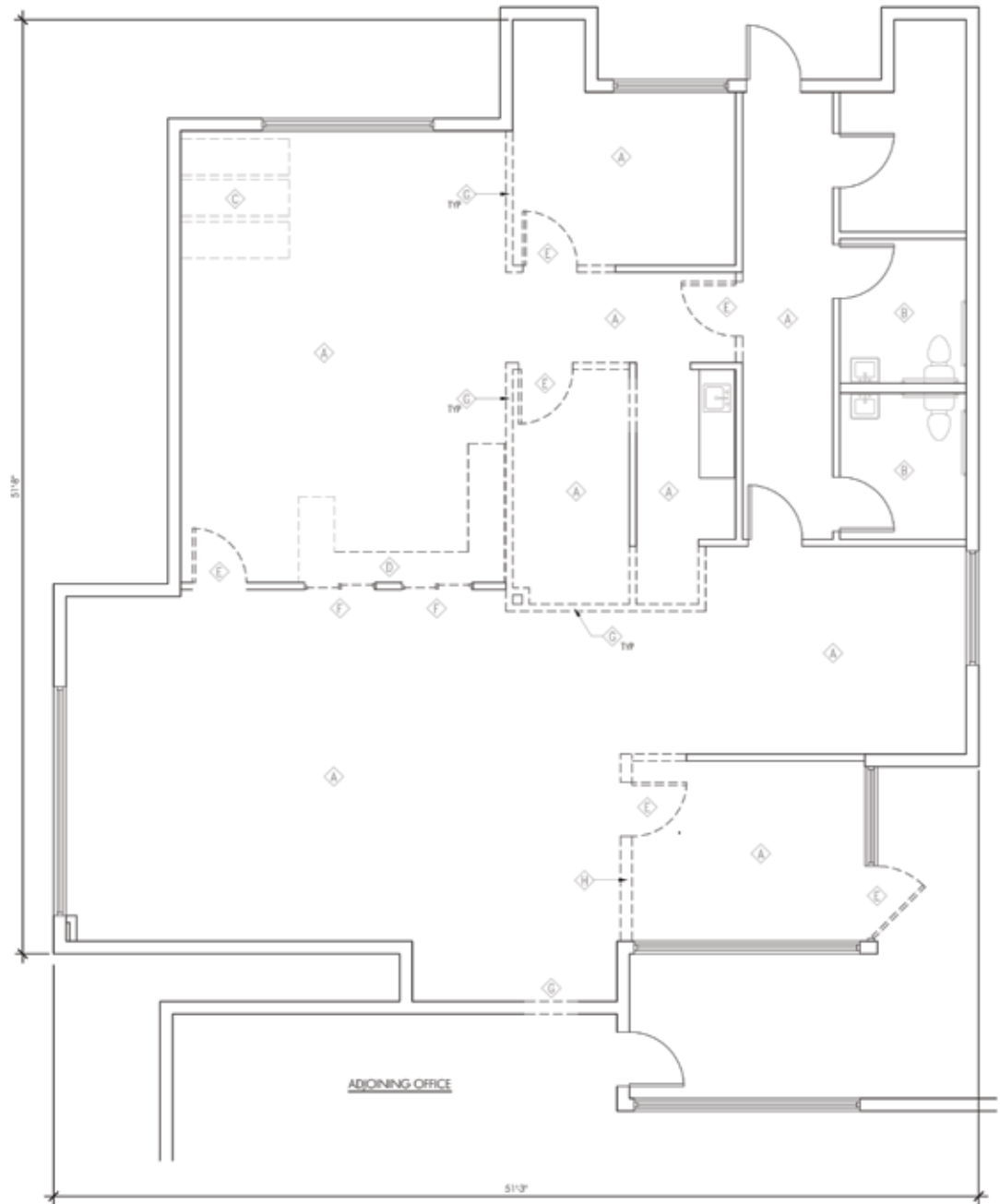
**TOM WEINHOLD**  
MANAGING DIRECTOR  
+1 602 224 4428  
tom.weinhold@cushwake.com

**ERIKA ECKBLAD**  
ASSOCIATE  
+1 602 224 4451  
erika.eckblad@cushwake.com



2555 E Camelback Rd, Suite 400  
Phoenix, Arizona 85016  
Main +1 602 954 9000  
Fax +1 602 253 0528  
cushmanwakefield.com

# DESERT COVE MEDICAL PLAZZA



8962 E. DESERT COVE AVE. | SCOTTSDALE, AZ 85260

©2021 Cushman & Wakefield. All rights reserved. The information contained in this communication is strictly confidential. This information has been obtained from sources believed to be reliable but has not been verified. No warranty or representation, express or implied, is made as to the condition of the property (or properties) referenced herein or as to the accuracy or completeness of the information contained herein, and same is submitted subject to errors, omissions, change of price, rental or other conditions, withdrawal without notice, and to any special listing conditions imposed by the property owner(s). Any projections, opinions or estimates are subject to uncertainty and do not signify current or future property performance.



PHYSICIANS REALTY TRUST

## FOR LEASING INFO, PLEASE CONTACT:

### **SHEILA BALE**

MANAGING DIRECTOR

+1 602 224 4454

sheila.bale@cushwake.com

### **TOM WEINHOLD**

MANAGING DIRECTOR

+1 602 224 4428

tom.weinhold@cushwake.com

### **ERIKA ECKBLAD**

ASSOCIATE

+1 602 224 4451

erika.eckblad@cushwake.com



PHYSICIANS REALTY TRUST

2555 E Camelback Rd, Suite 400  
Phoenix, Arizona 85016  
Main +1 602 954 9000  
Fax +1 602 253 0528  
[cushmanwakefield.com](http://cushmanwakefield.com)

©2021 Cushman & Wakefield. All rights reserved. The information contained in this communication is strictly confidential. This information has been obtained from sources believed to be reliable but has not been verified. No warranty or representation, express or implied, is made as to the condition of the property (or properties) referenced herein or as to the accuracy or completeness of the information contained herein, and same is submitted subject to errors, omissions, change of price, rental or other conditions, withdrawal without notice, and to any special listing conditions imposed by the property owner(s). Any projections, opinions or estimates are subject to uncertainty and do not signify current or future property performance.